



KEY BENEFITS

Integrations

CRM Charge integrates with Microsoft Dynamics CRM, and provides superior functionality and flexibility for credit card and eCheck payment processing.

Security and Fraud Prevention

Supports Address / ZIP Verification, CVV2, Level 2 and Level 3 Verification.

Compliance with PA-DSS

CRM Charge customers can rest assured that the application will be in compliance with PA-DSS; meeting the highest security data standard in the industry.

Cost Efficient

Eliminate redundant, error-prone data-entry and reduce time spent on reconciliation by as much as 75% and achieve rapid ROI.

Trusted

With almost 1000 global customers, Nodus has a proven track record and leads the market in reliability, robustness and ease of use. Nodus is the only one-stop shop for electronic payment processing software and services in MBS market.

Product Features at a Glance:

- Extend the capabilities of the CRM solution
- Verifies credit card payments in real-time and batch mode directly from Dynamics CRM
- Allow sales and customer service personnel to preauthorize and charge electronic payments
- Increase organization-wide access and visibility to vital order and payment information
- Save card transactions in a batch for later processing
- Query processed & historical transactions
- Support multiple payment gateways and processors

CRM Charge

Real-time or Batch Mode Electronic Payment Processing for Microsoft Dynamics CRM Online or On-Premise

Microsoft Dynamics CRM offers familiar and flexible functionality that works within the Microsoft Office environment. It has transformed the way many companies automate their business processes. CRM Charge is a critical tool for ensuring many sales related processes are handled in Dynamics CRM, where payment is required as part of the transactions. CRM users can create sales document and choose to charge the transaction in real-time or save it in a batch for later processing.

Essential Payments Management

CRM Charge provides secure efficient electronic payment management for Microsoft Dynamics CRM. It allows users to process credit cards and enter electronic transactions directly from the CRM sales modules and have those payments verified without leaving the CRM environment. This increases the accessibility and visibility of order and payment information across company-wide departments so businesses can efficiently capture customer information, process sales orders and satisfy customer demand.

Fast and Secure Credit Card Processing

Companies today need a system for accepting credit cards that is fast, secure, and reliable. Nodus' CRM Charge provides faster approval times and automatic data transfer to the CRM system. This effectively increases productivity, reduces overhead, and streamlines business operations and allows for a rapid ROI. CRM Charge enhances the CRM ability to optimize customer satisfaction and improves the process efficiency of payment collection.

More Payment Functionality

CRM Charge provides the power and flexibility to add more payment functionality to CRM applications. These include:

- The ability to process credit card and eCheck transactions for both Account & Contact in Microsoft Dynamics CRM
- Secure storage of multiple credit card numbers for each account in Microsoft Dynamics CRM
- Support for every type of sales documents : Quote, Order, Invoice
- Support for multiple gateways and processors for competitive merchant account service rate
- Reports, receipts, and specific transaction inquiry for credit card transactions

Achieve High Level of Customer Satisfaction

With detailed and complete customer information available to all departments, companies can instantly retrieve and utilize reports to derive customer insights from detailed order and payment information. All members of the organization gain access to the information necessary to deliver consistent customer service and ensure a high level of customer satisfaction. Start verifying credit card information from Microsoft Dynamics CRM today.

SYSTEM REQUIREMENTS

- Microsoft Dynamics CRM 4.0 and CRM 2011
- Microsoft Windows Server 2003 and 2008
- Microsoft SQL Server 2005 and 2008
- Internet access required

GATEWAYS

- PayPal Payflow Pro (Verisign)
- Paymentech
- Moneris
- Avalara
- First Data
- CyberSource
- USA ePay
- Payment Alliance
- Authorize.net
- Payfuse (TYSYS)

ABOUT NODUS

Nodus Technologies, Inc. is a leading provider of electronic payment & business process automation software for small and mid-size companies. Nodus leverages Service Oriented Architecture and web services technologies to provide cost effective, comprehensive: e-commerce, electronic payments & retail management solutions for Microsoft Dynamics® ERP. Visit www.nodus.com for more information on Nodus® business solutions - eStore Solution Stack, ePay Advantage, Credit Card Advantage Retail Advantage, & other products & services.

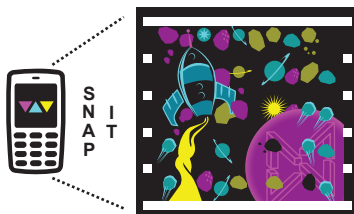
Contact Info:

2099 S. State College Blvd., Ste. 250
Anaheim, CA 92806

Phone: 909.482.4701

Fax: 909.482.4705

www.nodus.com



Get the free app for your phone at
<http://gettag.mobi>

CRM Charge Product Features:

CRM Charge allows users to process credit cards and enter electronic transactions directly from their Microsoft Dynamics CRM sales modules and have those payments verified in real-time without leaving the CRM environment. Processing payments and transactions through its web-based design is fast, secure, and reliable.

Using CRM Charge, businesses can eliminate redundant, error-prone data-entry and reduce time spent on reconciliation by as much as 75%.

FEATURES:	Available
Real-Time Processing and Verification for Both CRM Contacts or Accounts	✓
Support Latest Credit Card Tokenization Technology for Off-premises Storage to Reduce PCI Compliance Burden	✓
Encryption & Card Number Masking	✓
Address / ZIP Verification	✓
Level 2 and Level 3 Verification	✓
Failure on CVV2 Mismatch	✓
End of Day Procedures	✓
Customer Inquiry	✓
Multiple Credit Cards Storage	✓
Email Receipt	✓
Multiple Payment Gateways	✓
Batch Mode Processing and Verification	✓
Card Transaction Reports	✓
Open Architecture	✓
Customization Available	✓

One-Stop Shop for Payment Processing Software and Services

Aside from providing our acclaimed CRM Charge for processing credit card and electronic check payments within Microsoft Dynamics GP, Nodus provides payment gateway, merchant account and electronic check services. Nodus is the only vendor that can provide a single point of contact for both software and electronic payments support and services

What is PA-DSS?

Growing concerns over the increasing number of incidents involving mass compromises of sensitive credit card information led to the formation of a data security council for the payment industry. Tasked with ensuring adoption of Visa's PABP (Payment Application Best Practice) security initiatives, this group mandated that all electronic payment applications with credit card processing MUST meet PA-DSS (Payment Application – Data Security Standards) to guard against cyber data thefts.

http://usa.visa.com/download/merchants/payment_application_security_mandates.pdf

As a leading provider for electronic payment applications in the Microsoft Dynamics market place, Nodus is committed to offering only the most secure credit card processing applications. All payment software from Nodus complies with PA-DSS security standards.

Microsoft
GOLD CERTIFIED
Partner

ISV/Software Solutions
Business Process and Integration

 Microsoft Dynamics